



GluonCV

Tong He

Applied Scientist, Amazon Web Services.

2018.12.17



GluonCV: A Vision Toolkit

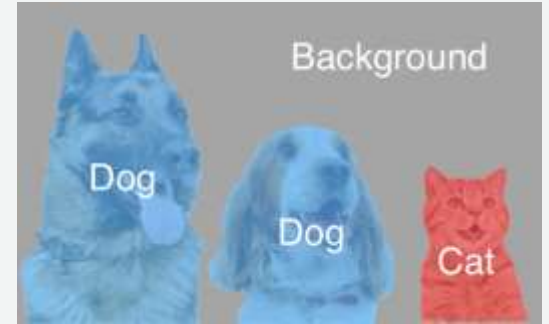
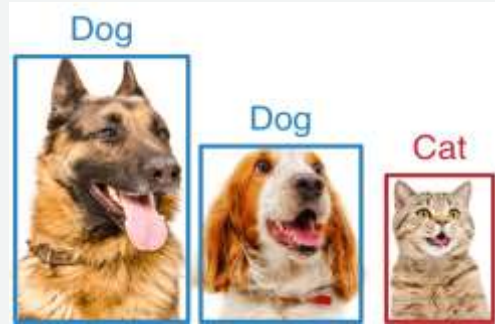
- State-of-the-Art Models
- Fast Development
- Easy Deployment
- Official Maintenance

The Best Open-Source Choice

- Pretrained Models with the Best Accuracy
- Most Comprehensive Model Zoo

Models

- Classification
- Detection
- Segmentation



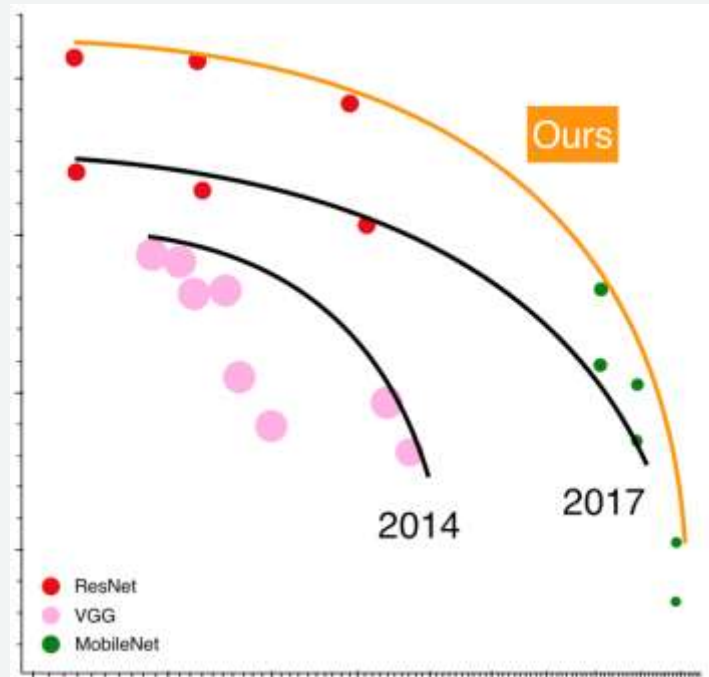
Models

- Classification

Model	Ours	Reference
ResNet-50	79.2%	76.2%
ResNet-101	80.5%	77.4%
MobileNet	73.3%	70.9%

Models

- Classification



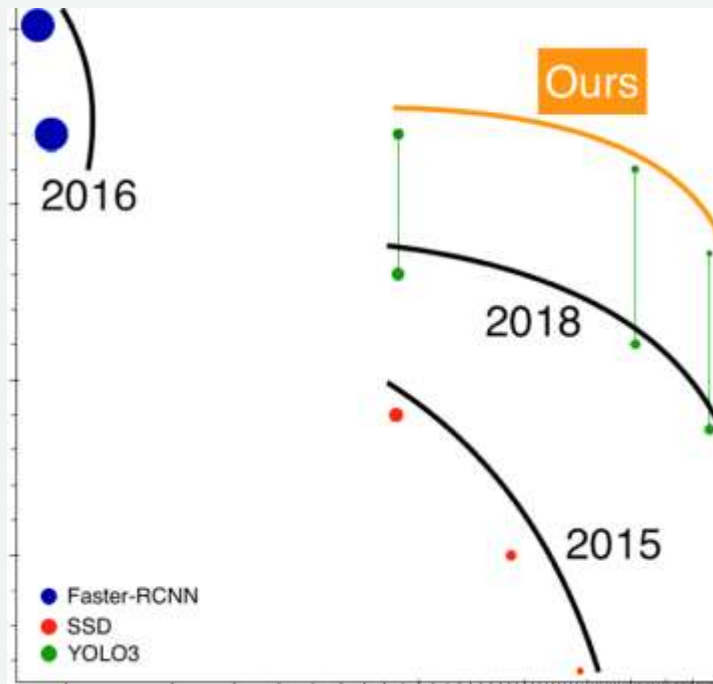
Models

- Detection

Model	Ours	Reference
Faster-RCNN	40.1%	39.6%
YOLOv3	37.0%	33.0%

Models

- Detection



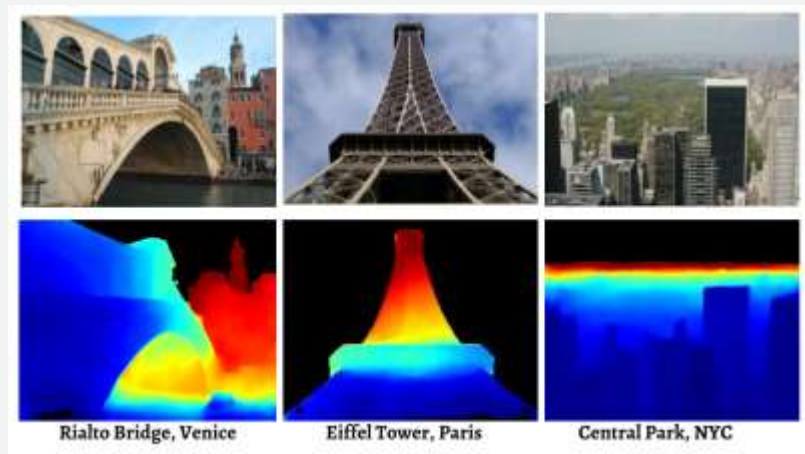
Models

- Segmentation

Model	Ours	Reference
Mask-RCNN	33.1%	32.8%
DeepLab-v3	86.7%	85.7%

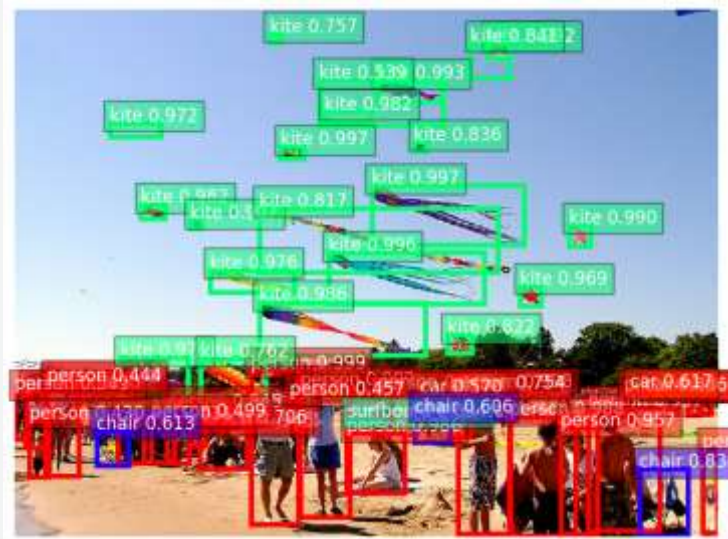
Models

- Available
 - Classification
 - Detection
 - Segmentation
 - Re-ID
 - GAN
- In-Development
 - Keypoint detection
 - Depth prediction



Demo

- Detection



- Segmentation



Demo

- WGAN



- Person Re-ID



Getting Started

- Gluon CV: <https://gluon-cv.mxnet.io>
- Gluon NLP: <https://gluon-nlp.mxnet.io>
- MXNet: <http://beta.mxnet.io/>
- Deep Learning Book: <http://diveintodeeplearning.org>